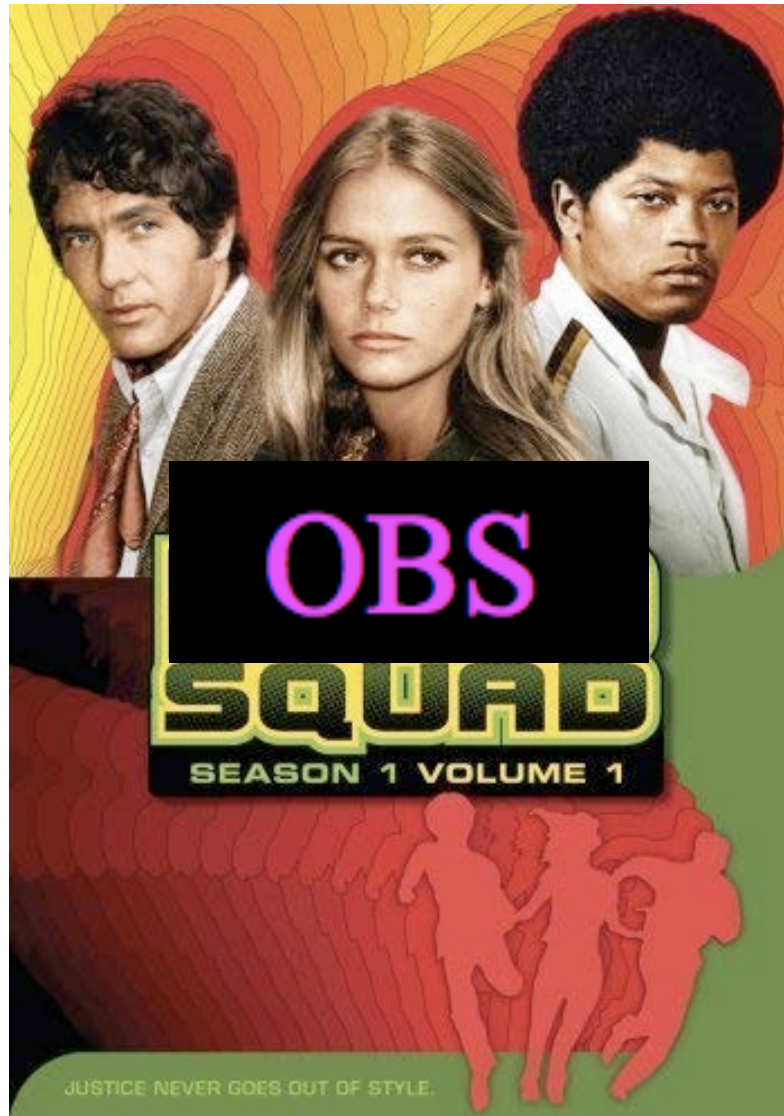




Observers Report

P.J. Goldfinger







CHARA Observing 2011





Observing Responsibilities

To assure the Highest Quality of scientific output possible for the PI's and in 2007 *at times* Protect the instrument from the PI. In 2011 We have everyone trained well with over 60 papers published and great collaboration !!!

The Observing Assistant has full responsibility for night-time operation of the Array/Observatory, related observing equipment :)

To continually evaluate the Array system status, including environmental control functions, and schedules of the targets to be observed.

Basically “ To make sure things don't go whacky ”





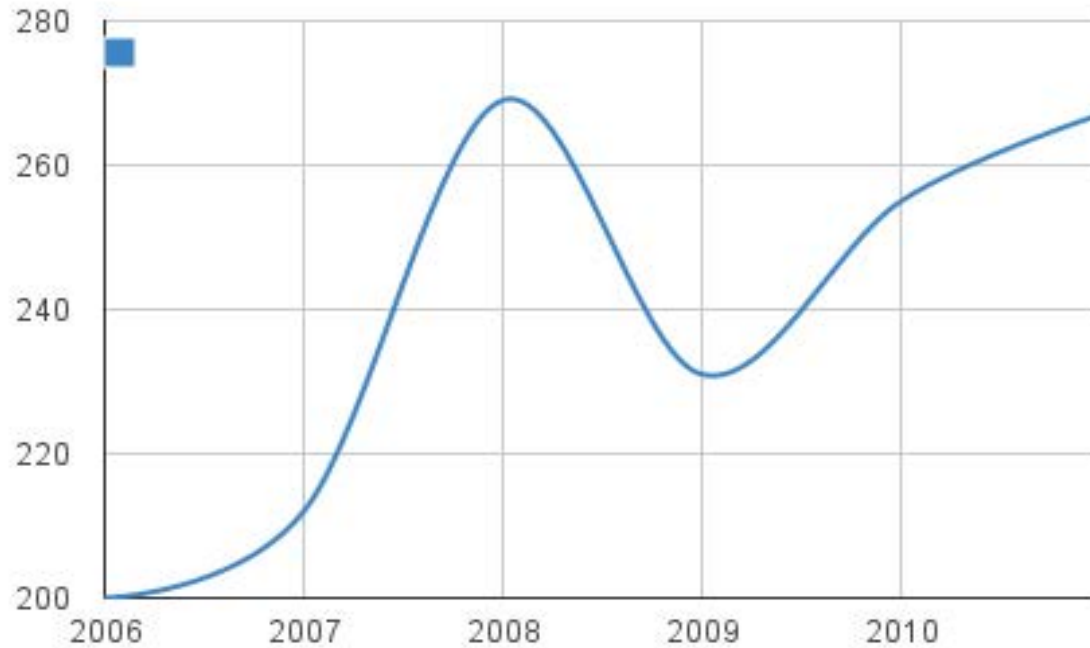
2011 Some Observing Stats

- - 71 days lost this is average
- - On sky days 267
- - 10cm~





On Sky Nights - Attempted History



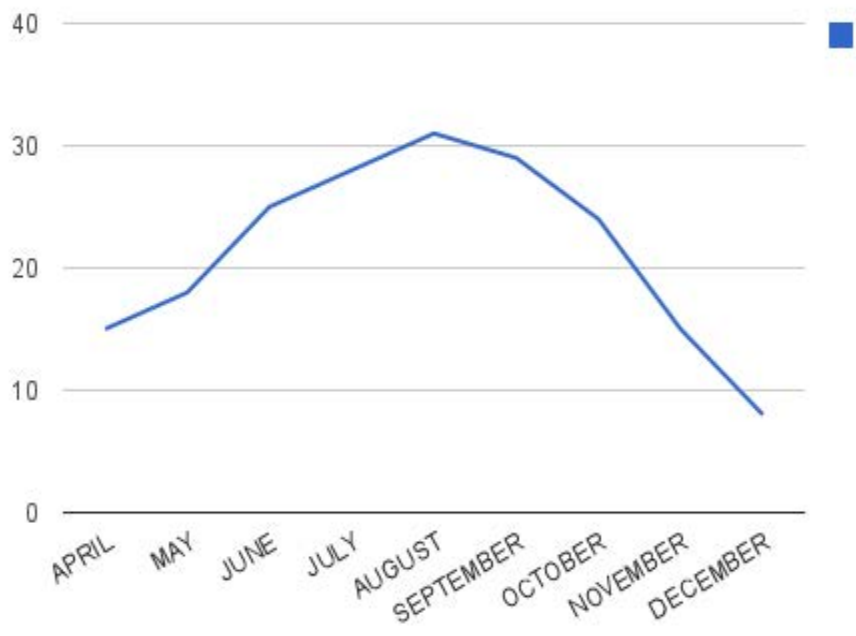
The most prevalent issues were of 2011:

- - Aging telescopes ~ New control software – Balancing .
- - Power outages causing system start up problems.





Nights with Data



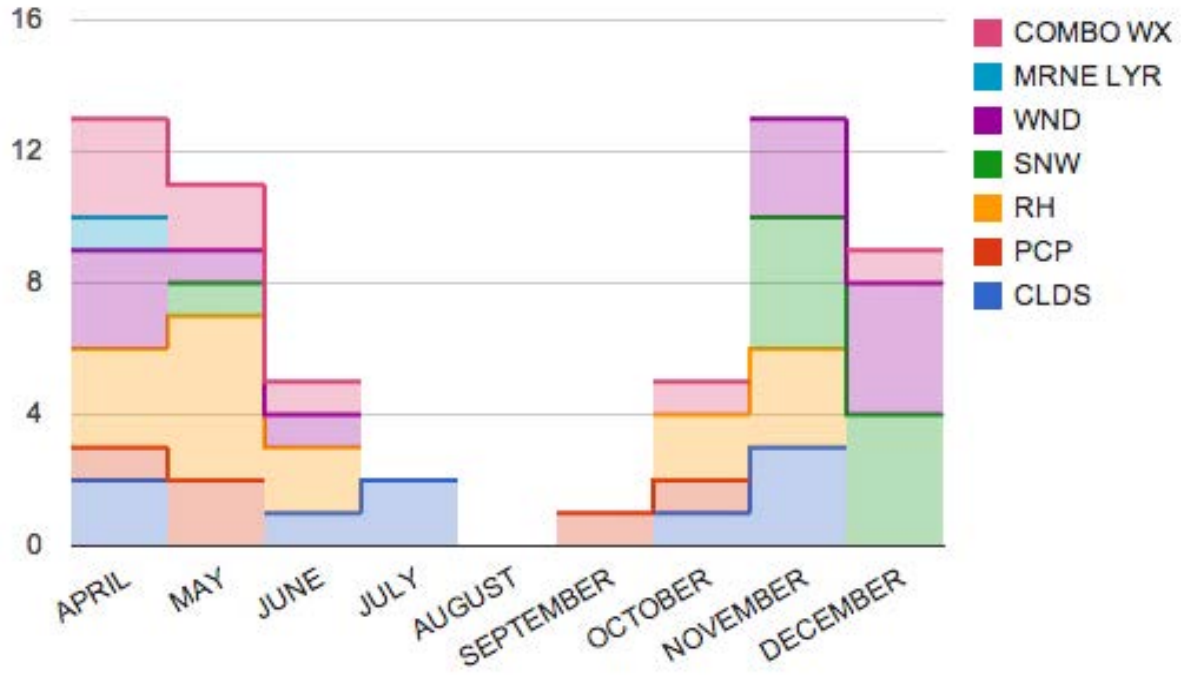
LESIA



Observatoire de la CÔTE d'AZUR

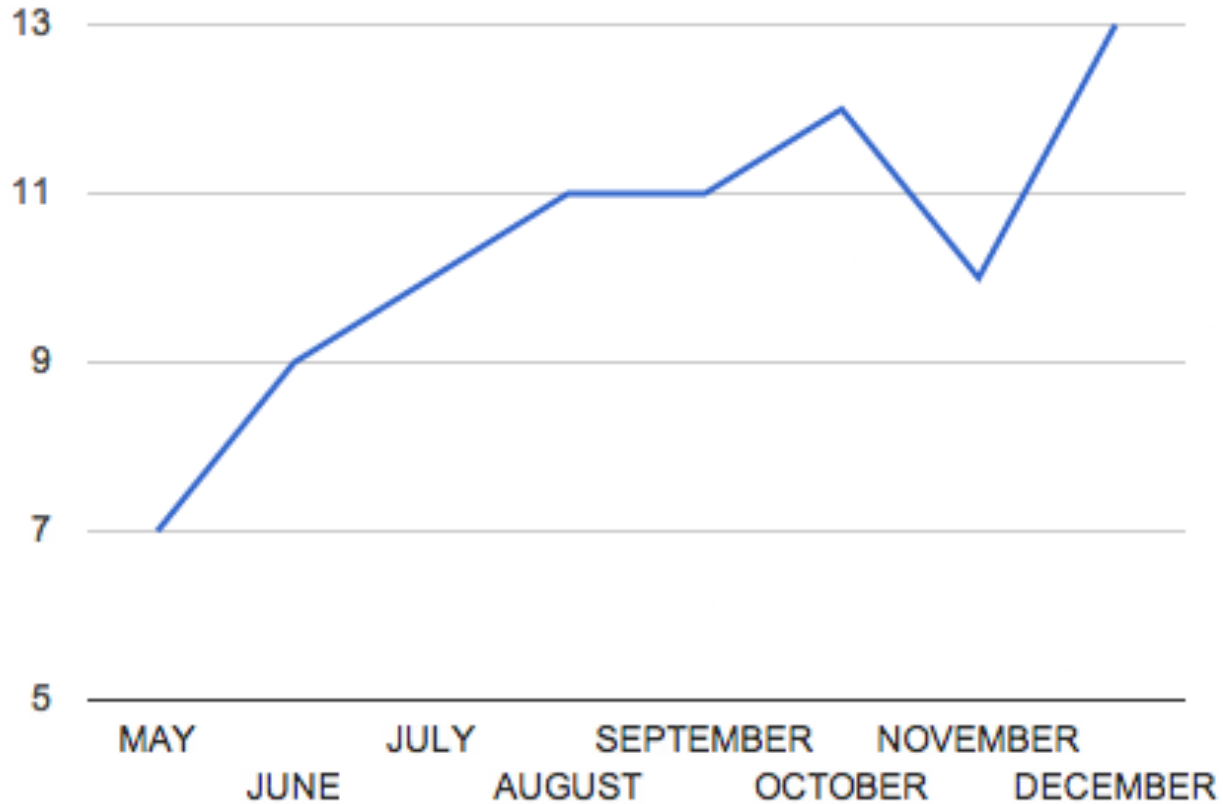


Weather Plot 2011





Monthly Seeing Averages



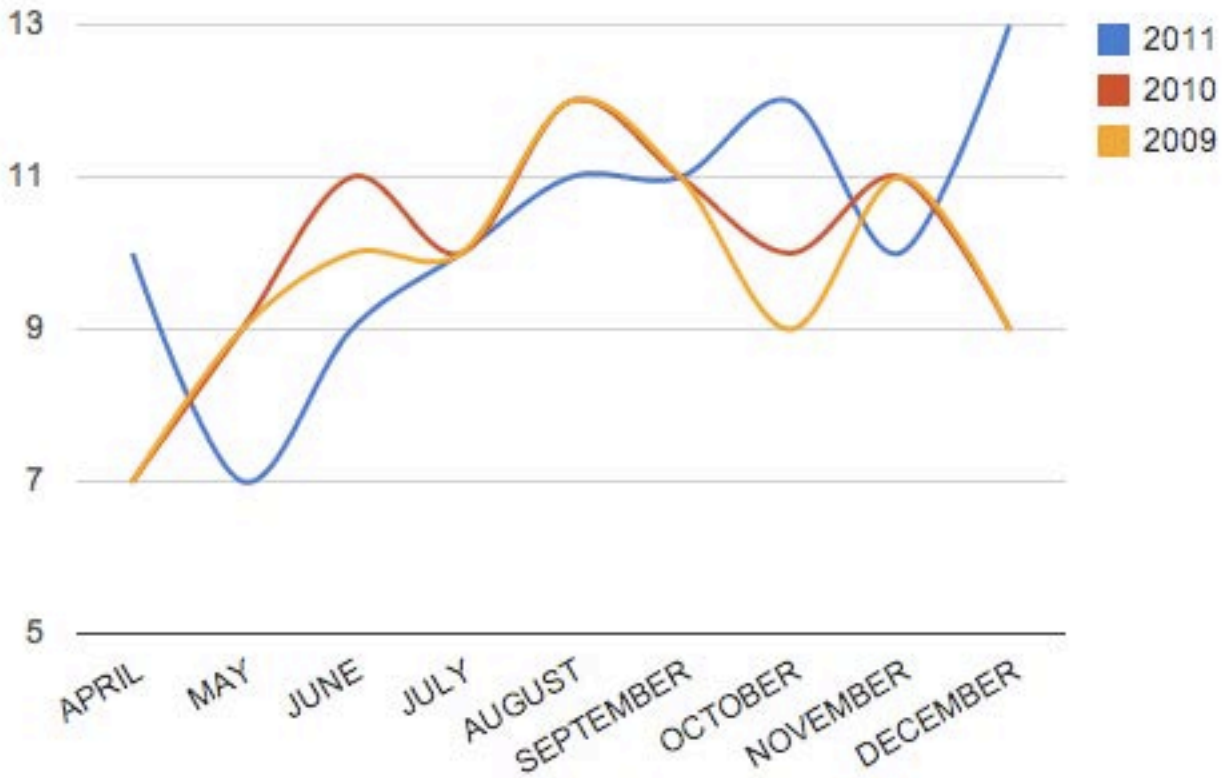


Nights Lost

- ~ Power outages - 4
- ~~~ Scheduled and reschedule too many !!
- ~ Tech nights 3
- ~ Bad seeing 5
- ~ Engineering 1
- ~ Murder Suspect 1



Seeing Comparison History



LESIA



Observatoire de la CÔTE d'AZUR



Array functionality

- - Array functionality works best...
- - Sometimes it acts up slightly as the Sturmann's leave.
- - Switching baselines beams, telescopes etc Operator cadence-
- - Observing Memoirs/Confessions ~ Xiao pops basketball
- - Lots of fringe dancing.
- - Newest baseline solutions ~ Rock ~
- - Finder/Acquisition Camera Integration ~ Dimmer Targets are easy to acquire.
- - Addition JouFlu
- - Climb is amazing !!



Future Thinking

- Programs to integrate this information from
- Other beam combiners into Cosmic Debris - Spoke to other colleagues
- • Or generate Somewhat Auto Observing Report into Cosmic Debris, Theo, Nils, PJ Discuss
- ~~~ Needs more effort



Observing Report Format

- **Program:** Beam Combiners are Us
- **Observer(s):** The Obs Squad
- **Baseline:** All 16
- **Seeing:** 30cm r0~ , 365 days of the year
- **Weather:** Perfect Atmosphere
- **Notes:**
 - - Please save technical issues for charatech@chara-array.org
 - - Report values not subjective exclamations ie: **SEEING:**
GREAT
 - - Remember These Obs Reports go to Important People :-)



CHARA Information

The screenshot shows a Wiki page for 'Mountain Accommodations' on the CHARA website. The page includes a navigation sidebar on the left with links like 'Wiki Home', 'Pages and Files', and 'Members'. The main content area has a title 'Mountain Accommodations' and a sub-header 'TRAVEL AND MOUNTAIN ACCOMMODATIONS'. It contains sections for 'Introduction', 'Travel', and 'Transportation'. The 'Transportation' section mentions public transport options from Pasadena to Mt. Wilson. The 'Directions' section provides detailed driving instructions from Pasadena to the observatory. The 'Alternate Route via Sunland Directions' section offers an alternative route if the main highway is closed. The 'Open after hours' section states that the observatory gates are open from 10:00 a.m. to 4:00 p.m. daily from the first weekend in April through the last weekend in November.

- Chara has a wiki page at <http://chara-array.wikispaces.com/>
- Newest addition to Wiki JouFlu !!!
- Also Visit the CHARA web site under User s Info for operational procedures, site information and other documents at: <http://www.chara.gsu.edu/CHARA/data/>
- Log in info required, if needed please inquire.
- Please join us for additions and edits to the Wiki .





Thank You - Dudes Really – Merci

- For your including me in your publications:
- ~ Educator and EPO friends return from Astronomy conferences bragging that they know me.
- ~ Rare and unique for special education teacher to have science publications listed in resume.
- ~ A fine example for entrance to astronomy field as a technician.