



Weather, Seeing, and Other Sundries

Nils Turner

14 March 2016 / CHARA Winter Meeting, Nice



Weather Station Uptime

	Cum.	2012	2013	2014	2015
E1	95.4	97.3	99.9	99.7	95.9
E2	82.0	97.7	93.0	62.2	3.4
S1	94.3	99.0	99.7	79.8	94.3
S2	93.9	92.8	91.7	98.5	97.0
W1	96.1	98.8	93.3	97.9	98.2
W2	98.5	98.8	92.3	99.6	98.0
L1	71.1	30.5	12.9	99.7	99.4

Table: Weather station uptimes as a percentage of time.



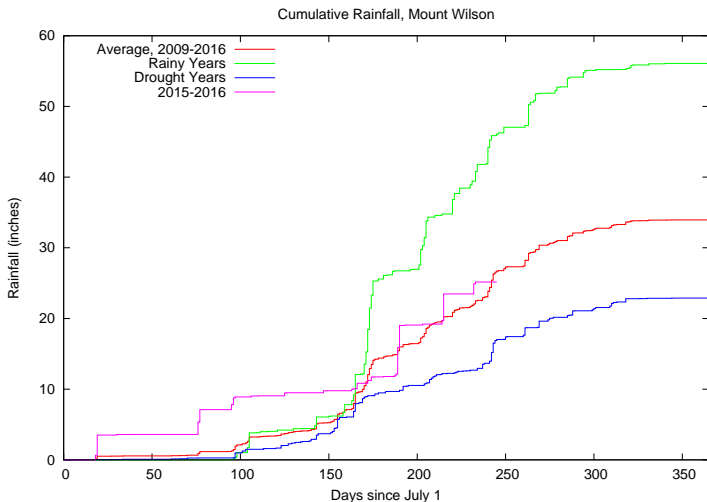
Cross-year Vital Stats

	2010	2011	2012	2013	2014	2015
Measurable Wind	23.2	30.4	35.6	27.5	11.4	14.3
High Wind [†]	0.7	0.5	0.3	0.3	0.2	0.2
High Humidity [‡]	21.6	18.2	15.6	13.5	16.0	17.5

Table: Table entries are percentages of time. Values quoted are the largest of the six bunker weather stations. † High wind is defined as being above 20 kph. ‡ High Humidity is defined as being above 90%.

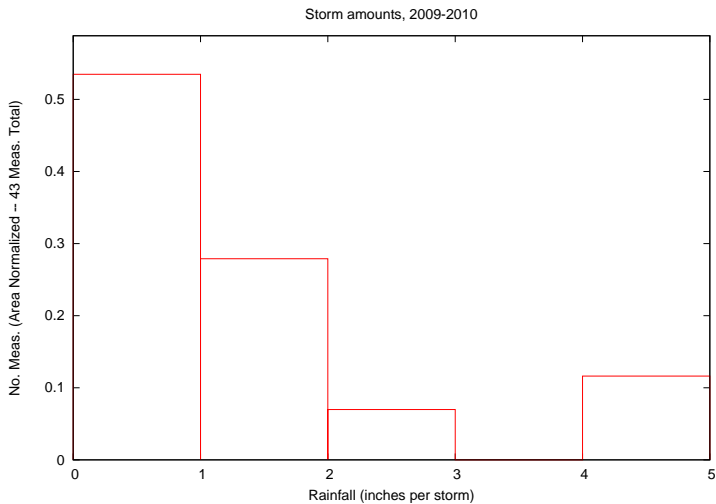
Rainfall

data courtesy of L. Webster



Rainfall

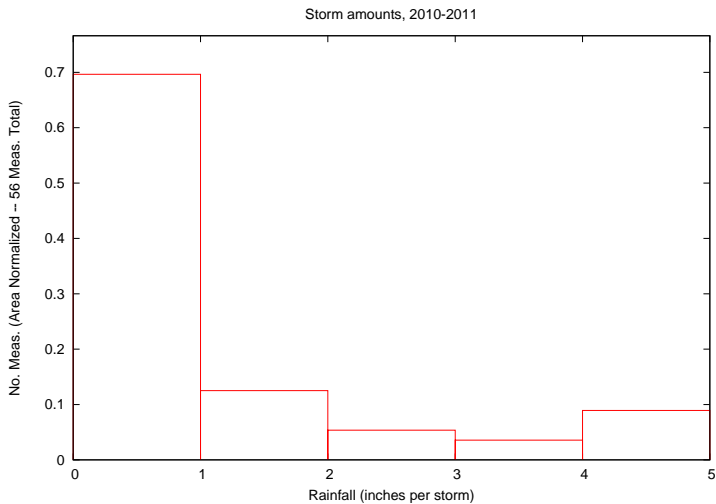
amount per storm





Rainfall

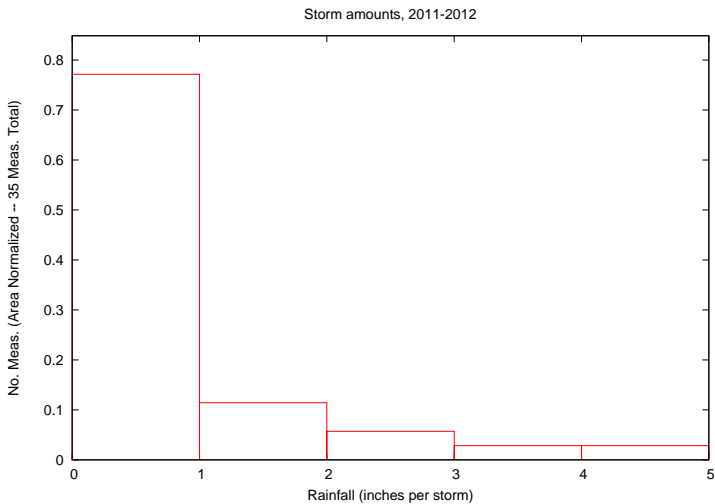
amount per storm





Rainfall

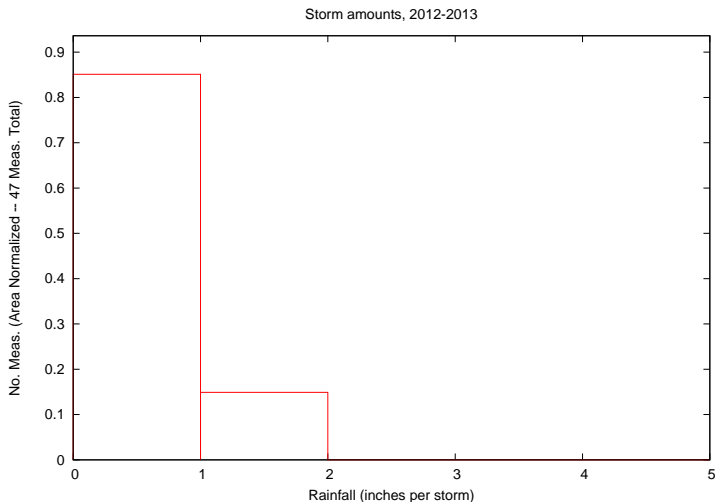
amount per storm





Rainfall

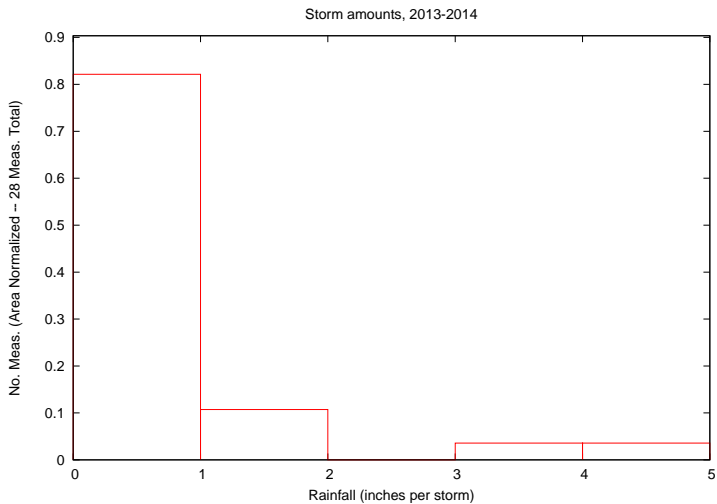
amount per storm





Rainfall

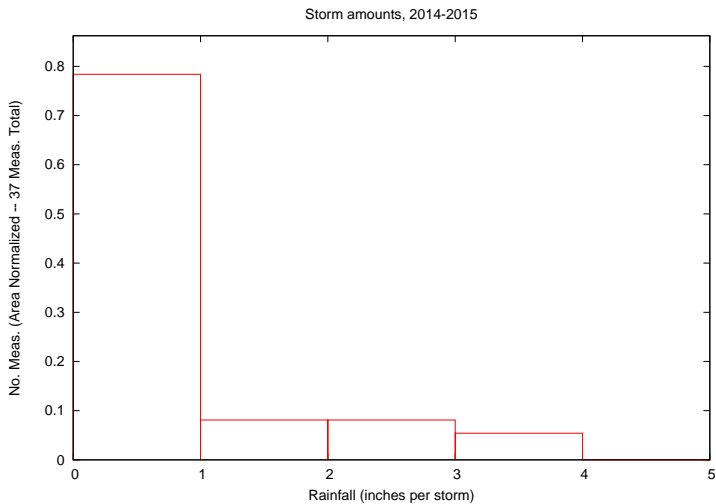
amount per storm





Rainfall

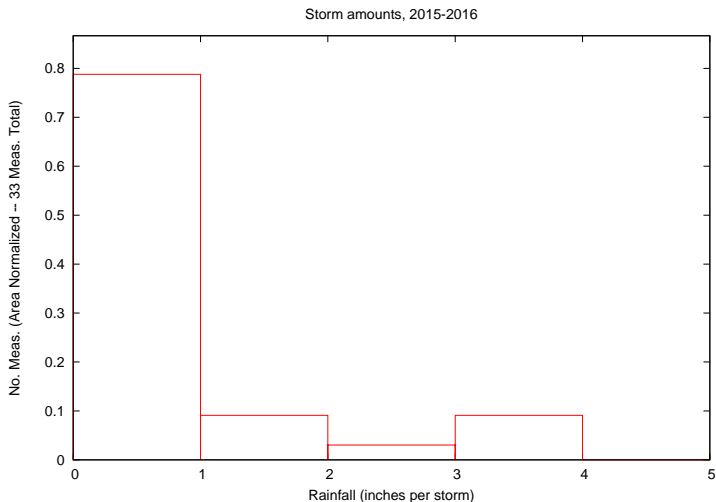
amount per storm





Rainfall

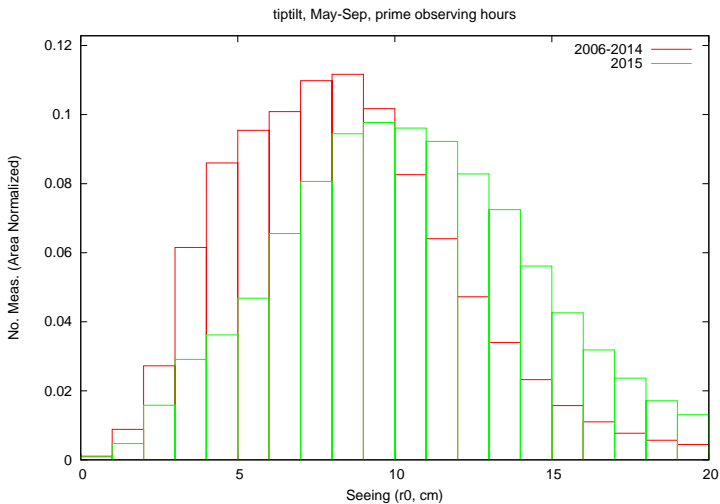
amount per storm



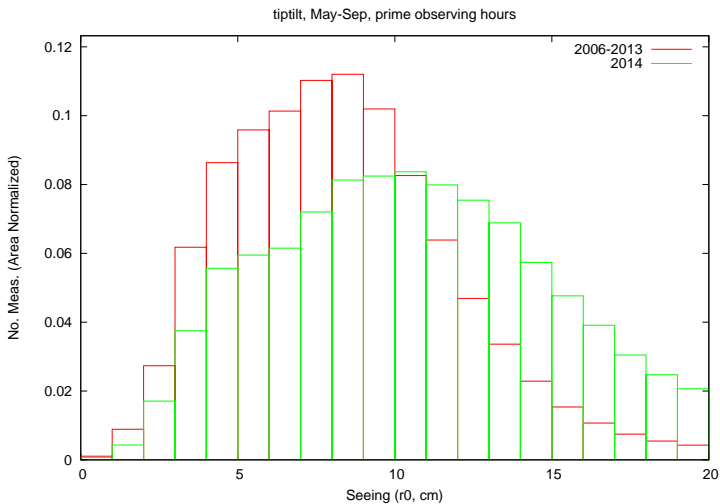


Seeing

r_0 values



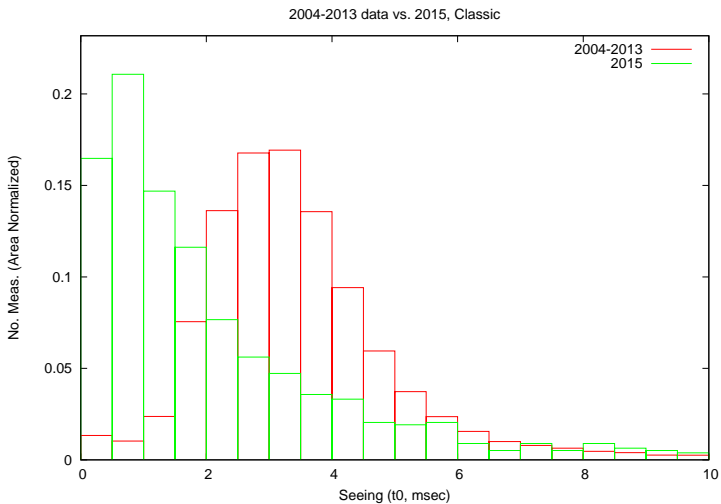
Seeing

 r_0 values, last year

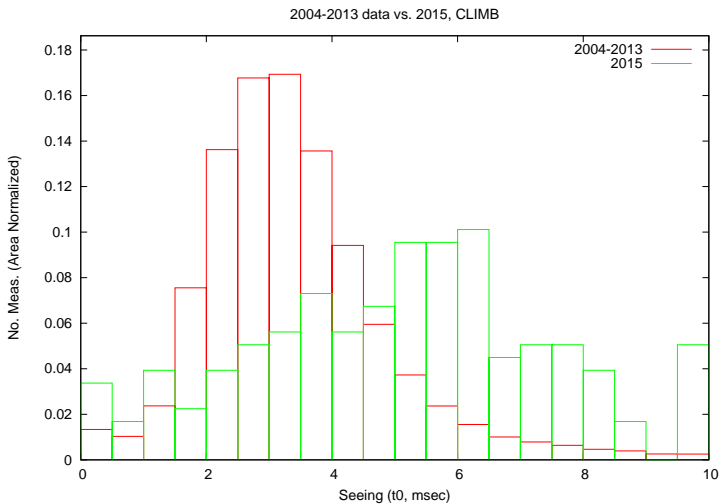


Seeing

t_0 values



Seeing

 t_0 values



Control System

Status

- ▶ Nearly completed CVS-to-git transition



Control System

Status

- ▶ Nearly completed CVS-to-git transition – just pavo to go, and to sift through some older source code



Control System

Status

- ▶ Nearly completed CVS-to-git transition – just pavo to go, and to sift through some older source code
- ▶ VPN services to be retired in favor of ssh-tunnel



Control System

Status

- ▶ Nearly completed CVS-to-git transition – just pavo to go, and to sift through some older source code
- ▶ VPN services to be retired in favor of ssh-tunnel
- ▶ Transition to Linux Mint

Control System

Linux Mint





Control System

Linux Mint

- ▶ Ubuntu variant



Control System

Linux Mint

- ▶ Ubuntu variant – with simplified update schedule



Control System

Linux Mint

- ▶ Ubuntu variant – with simplified update schedule
- ▶ XFCE desktop



Control System

Linux Mint

- ▶ Ubuntu variant – with simplified update schedule
- ▶ XFCE desktop – still to figure out per-computer icon layout



Control System

Linux Mint

- ▶ Ubuntu variant – with simplified update schedule
- ▶ XFCE desktop – still to figure out per-computer icon layout
- ▶ Installs quickly, about 45 minutes per machine



Control System

Linux Mint

- ▶ Ubuntu variant – with simplified update schedule
- ▶ XFCE desktop – still to figure out per-computer icon layout
- ▶ Installs quickly, about 45 minutes per machine
- ▶ Will be installed throughout by start of observing season