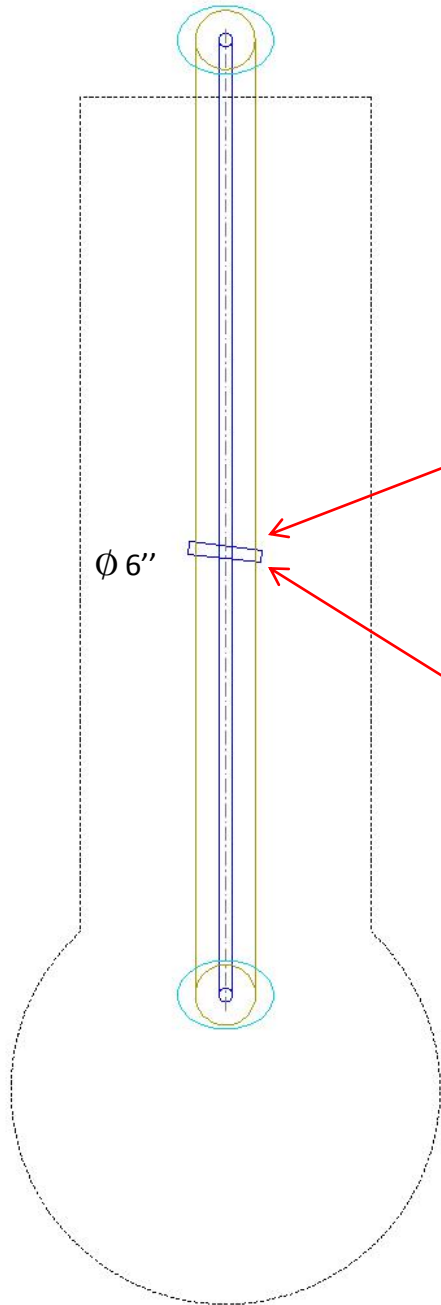


CENTRAL OBSCURATION IS 23 %  
SLIGHTLY ASYMMETRIC DUE TO M3

# FORK SIDE VIEW

M4



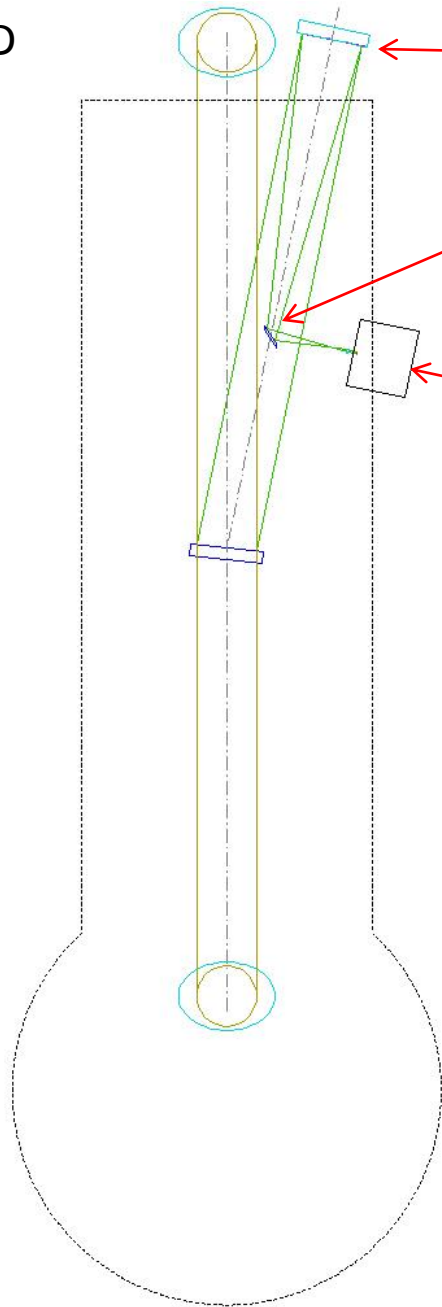
DICHROIC or UNCOATED ( $\cong 4\%$  REFLECTED)

$\phi 6''$

BACKSIDE AR COATED

M5

WFS FEED



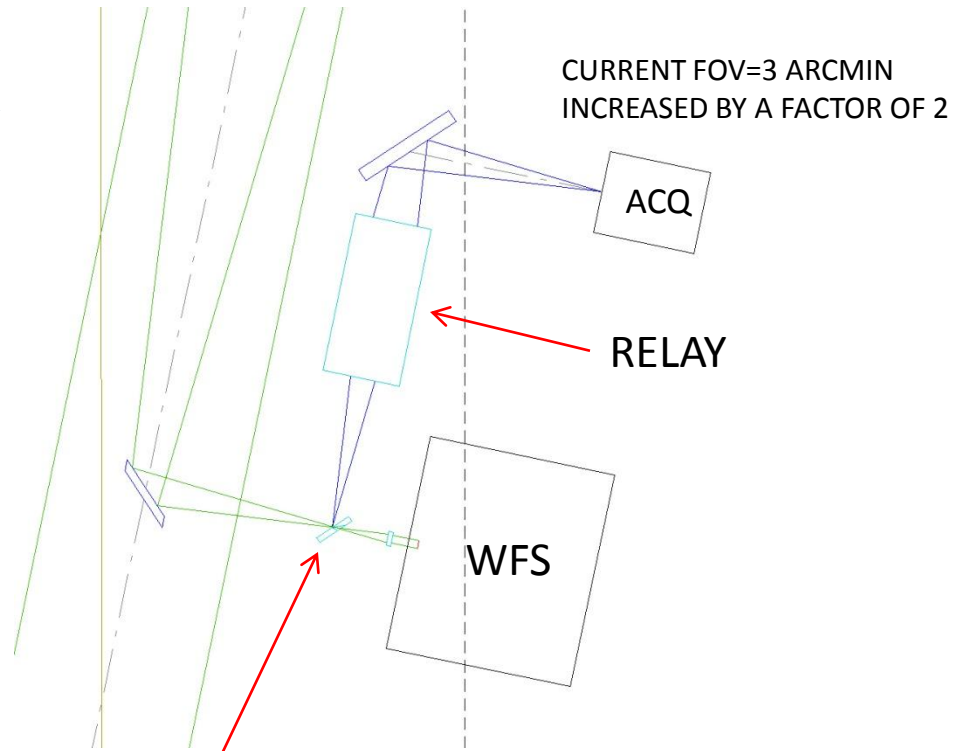
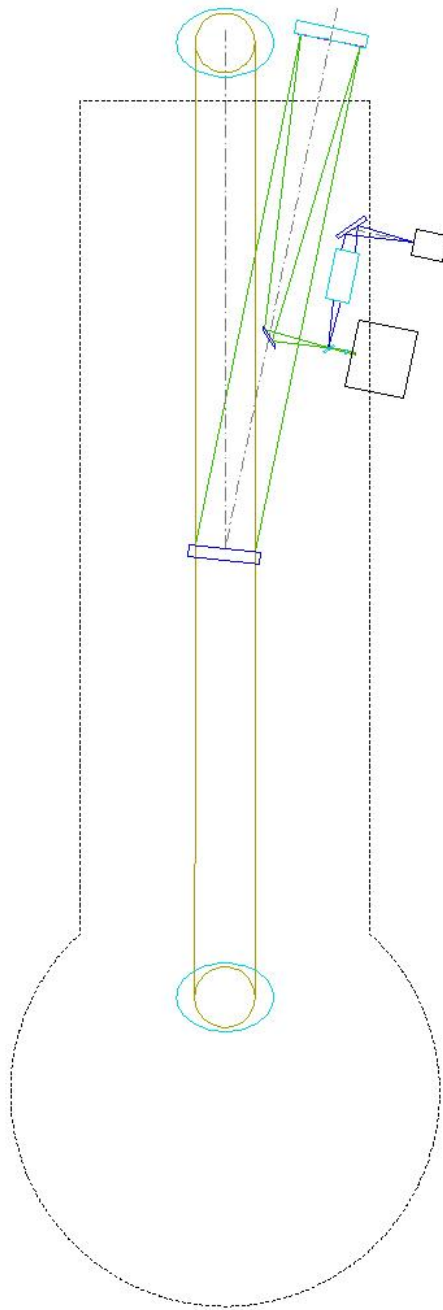
6" PARABOLIC MIRROR F/6-8

$$F_{eff} = 7.31 - 9.75 \text{ m}$$

SMALL FLAT IN THE SHADOW

WFS

# ACQUISITION SYSTEM



FLAT WITH PINHOLE

# STIMULUS SOURCE

LIGHT FROM THE RETRO AT M2  
WILL BE BLOCKED BY THIS FLAT

IF THE STIMULUS AND THE STAR ARE BOTH  
SEEN BY THE WFS (THROUGH THE PINHOLE)  
AND THE LASER FROM THE LAB IS FOCUSED  
TO THE TIP OF THE FIBER SOURCE (CAMERA),  
THE STAR IS SEEN IN THE LAB.

FIBER SOURCE

ROOM FOR DICHOIC CHANGER

30''X 90'' BREAD BOARD  
COULD BE THREE SMALLER  
BREAD BOARDS OR NARROW  
MOUNTED IN AN ANGLE

