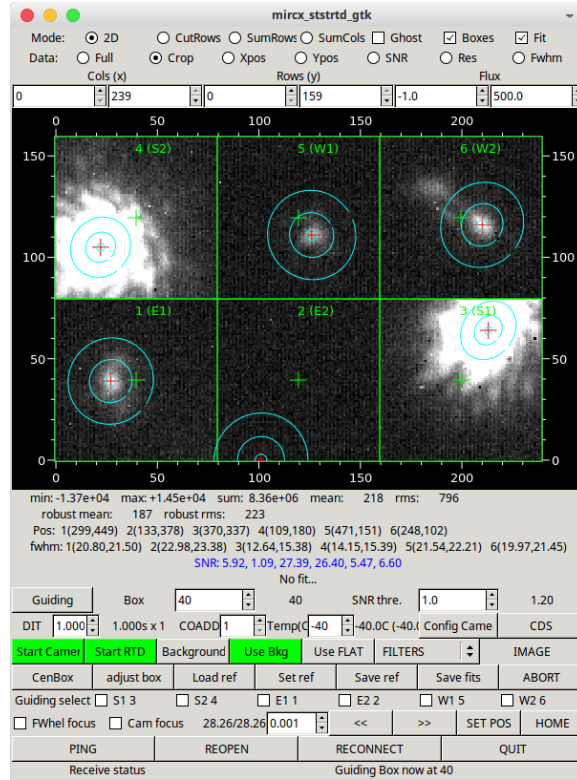
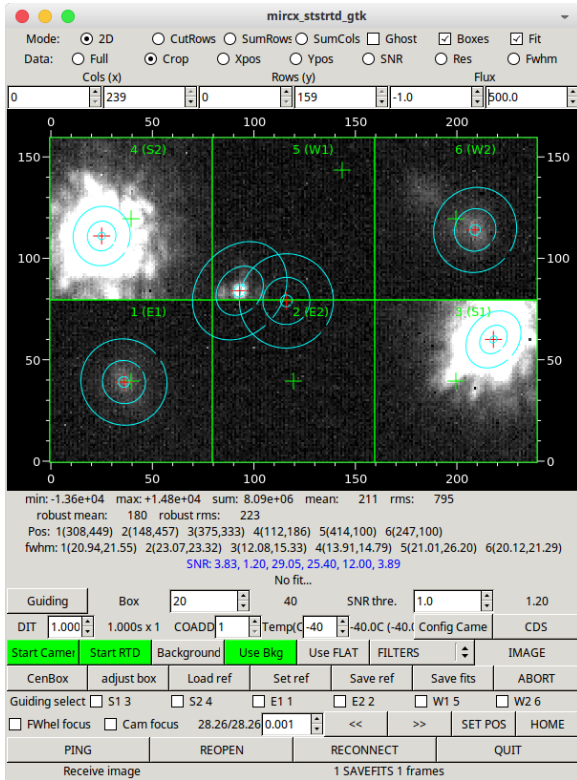


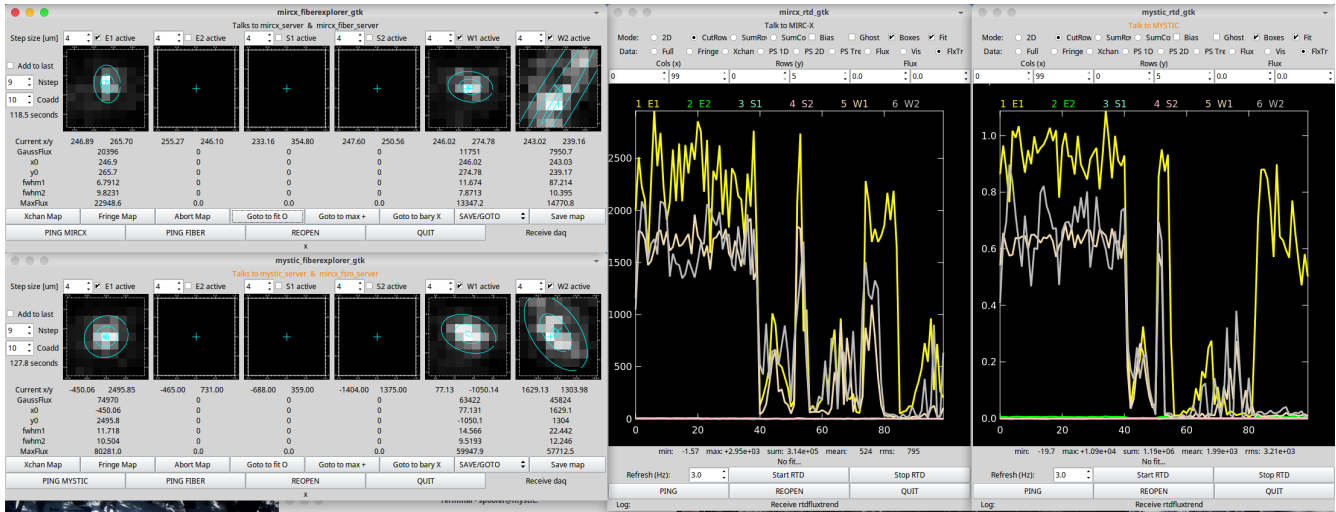
UT 2024May02 - Engineering Report

E1(Pop5)-W1(Pop5)-W2(Pop5) used for AO alignment tests.
S1-S2 used by CHARIOT.

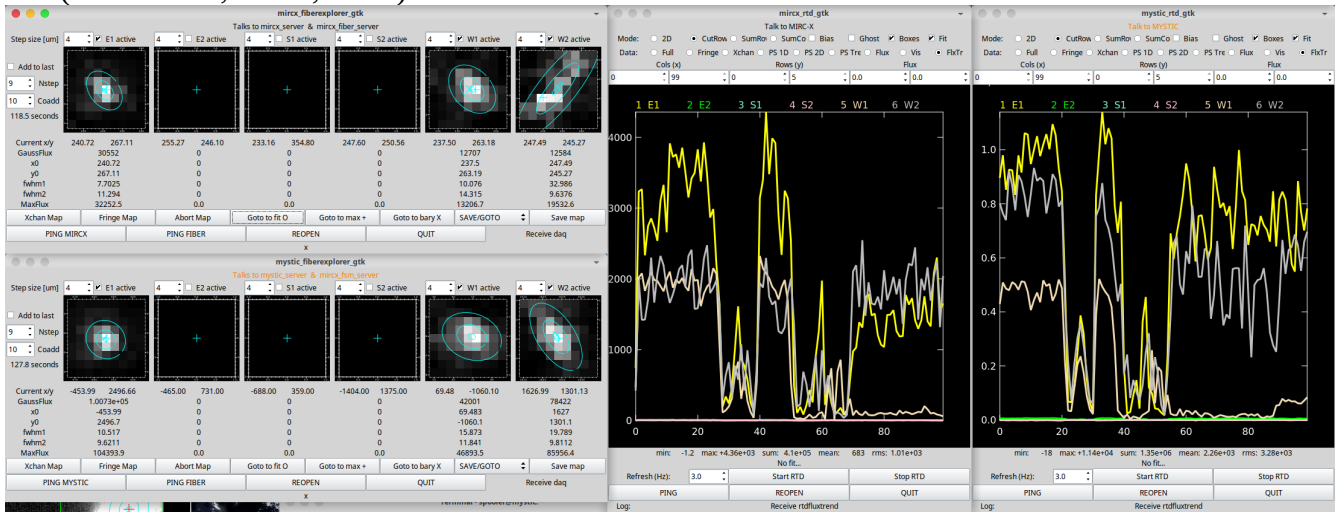
W1 image before and after aligning STST on HD 140774 (Az 87, El 67):



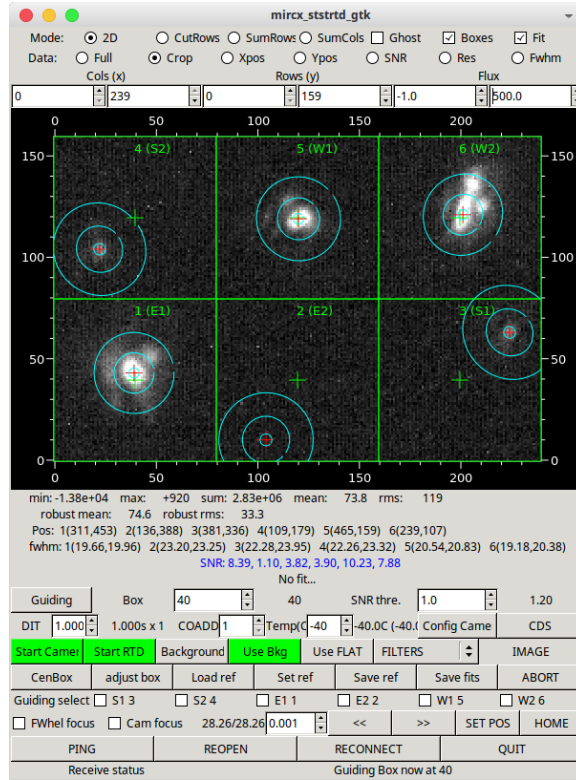
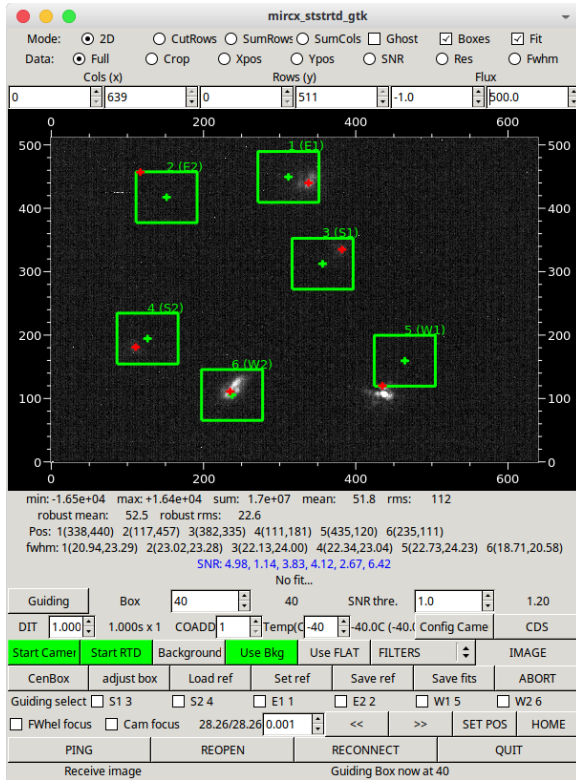
MIRCX/MYSTIC fiber maps using standard alignment sequence on all scopes (HD 140774, Az 87, El 67):



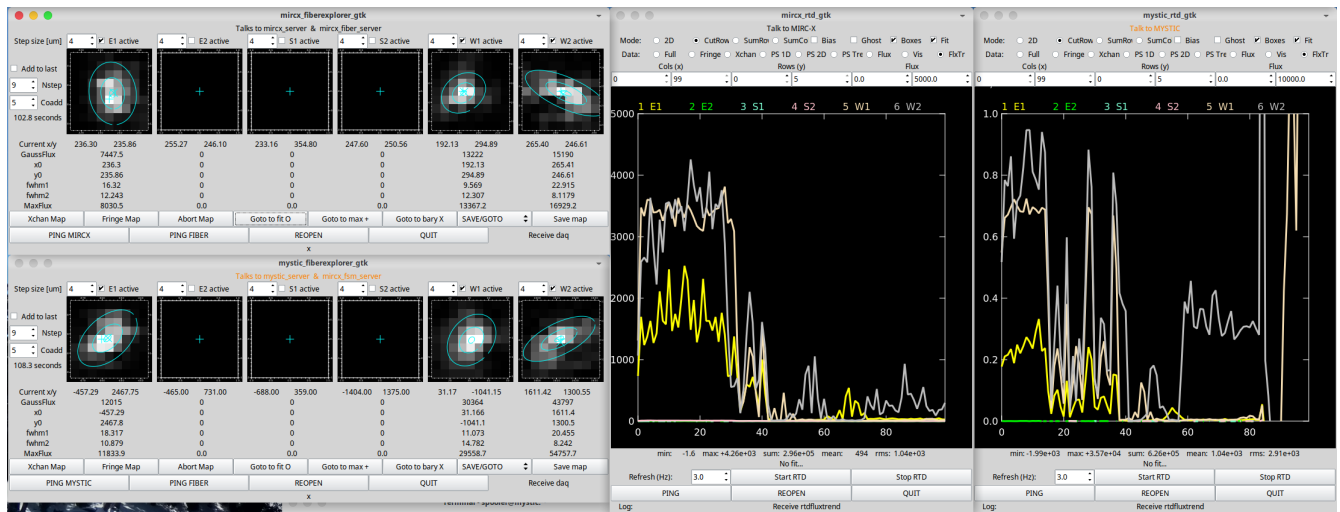
MIRCX/MYSTIC fiber maps using standard alignment sequence on E1,W2 and moving dichroic on W1 (HD 140774, Az 87, El 67):



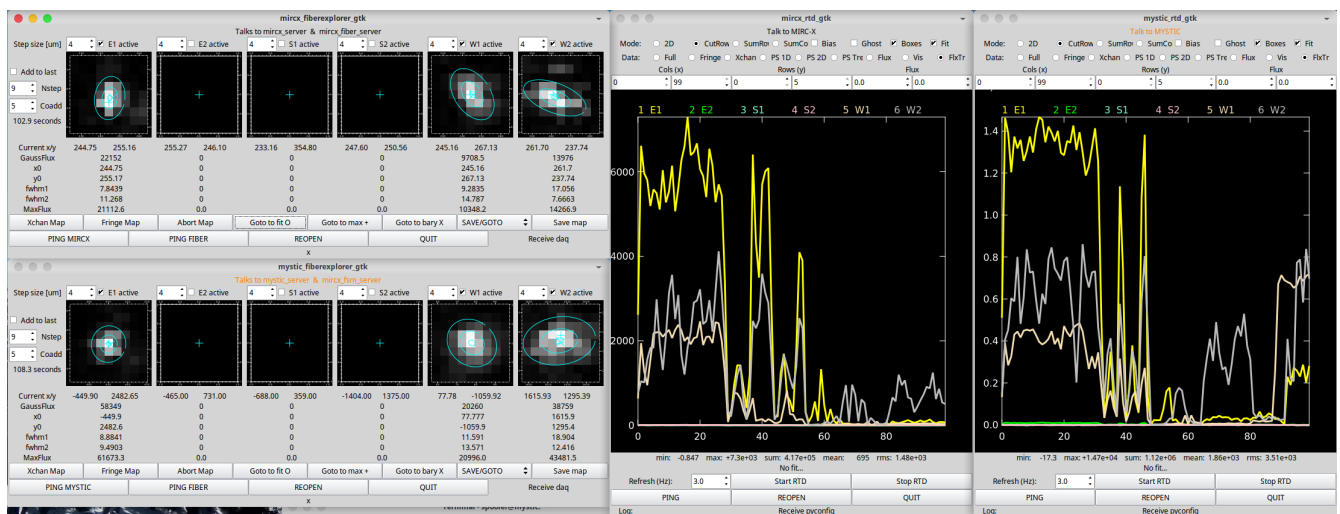
W1, E1, W2 images before and after aligning STST on HD 129972 (Az 202, El 72):



MIRCX/MYSTIC fiber maps and flux before aligning STST on HD 129972 (Az 202, El 72):



MIRCX/MYSTIC fiber maps and flux after aligning STST on HD 129972 (Az 202, El 72):



STST pupil before aligning STST on W1 and after aligning STST on W1. The W1 beam is sheared after aligning to STST. This is true whether we use the standard alignment sequence (keep AO dichroic fixed) or move the dichroic as part of the alignment sequence. For E1 and W2, STST is already aligned in both images:

