



Weather and Seeing Statistics

Nils Turner

24 March 2014 / CHARA Winter Meeting, Ann Arbor

Weather Station Uptime

	Cum.	2010	2011	2012	2013
E1	94.9	96.6	98.9	97.3	99.9
E2	92.7	97.4	94.7	97.7	93.0
S1	95.5	98.2	96.8	99.0	99.7
S2	93.0	94.2	98.2	92.8	91.7
W1	95.6	99.4	97.1	98.8	93.3
W2	94.3	87.3	97.3	98.8	92.3
L1	61.4	90.9	47.0	30.5	12.9

Table : Weather station uptimes as a percentage of time.

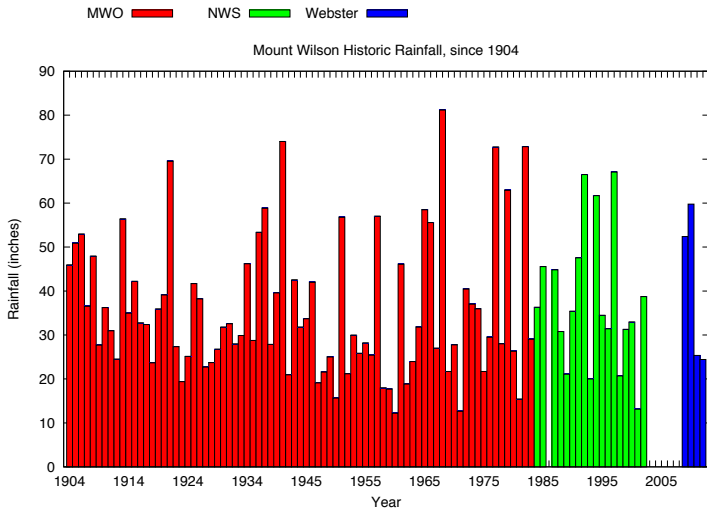
Cross-year Vital Stats

	2008	2009	2010	2011	2012	2013
Measurable Wind	16.2	19.2	23.2	30.4	35.6	27.5
High Wind [†]	0.2	0.2	0.7	0.5	0.3	0.3
High Humidity [‡]	14.0	16.5	21.6	18.2	15.6	13.5

Table : Table entries are percentages of time. Values quoted are the largest of the six bunker weather stations. † High wind is defined as being above 20 kph. ‡ High Humidity is defined as being above 90%.

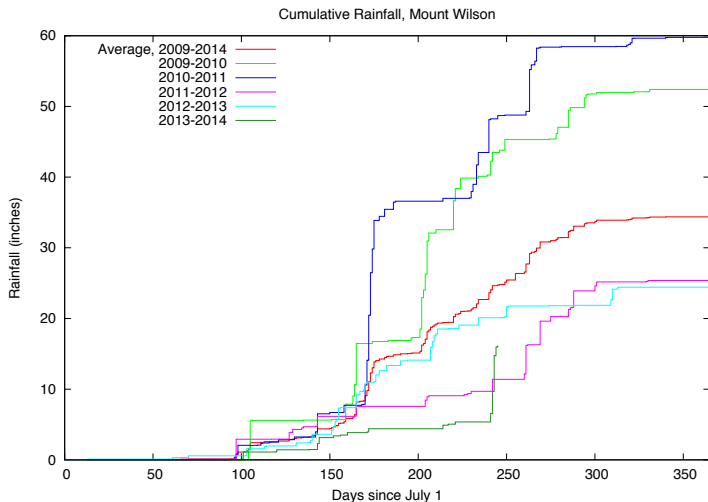
Rainfall

compiled by L. Webster



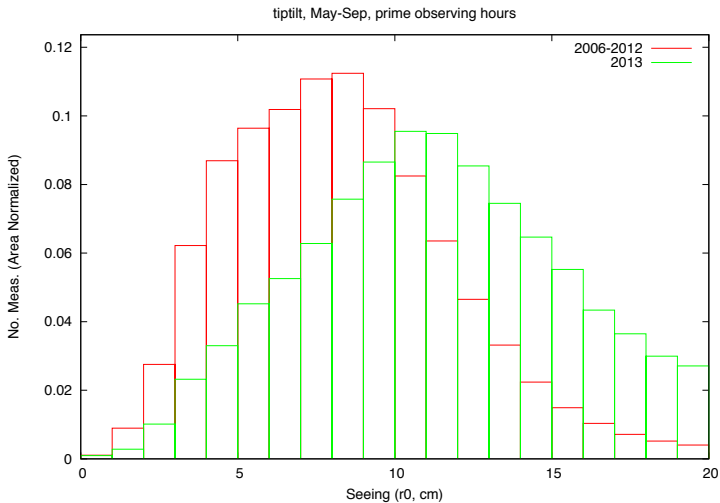
Rainfall

data courtesy of L. Webster

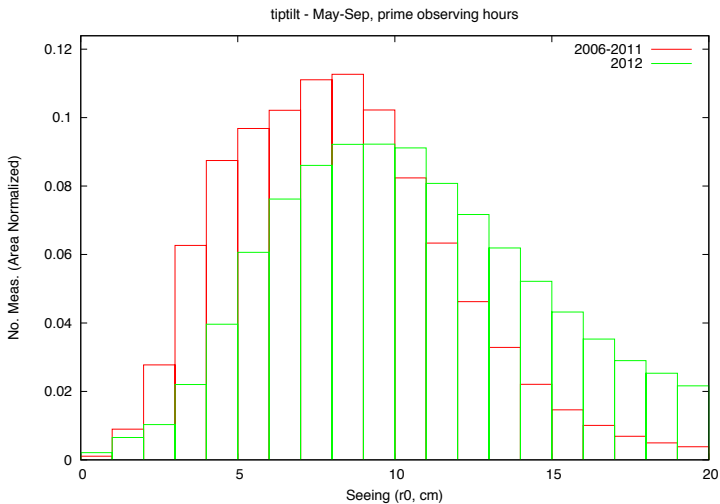


Seeing

r_0 values

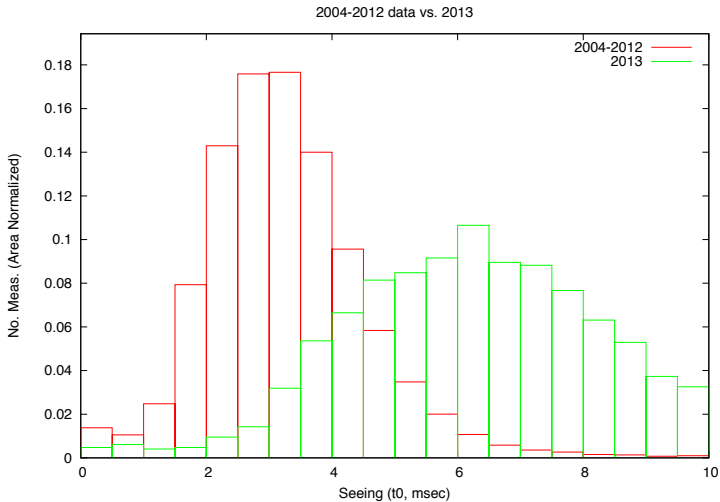


Seeing

 r_0 values, last year

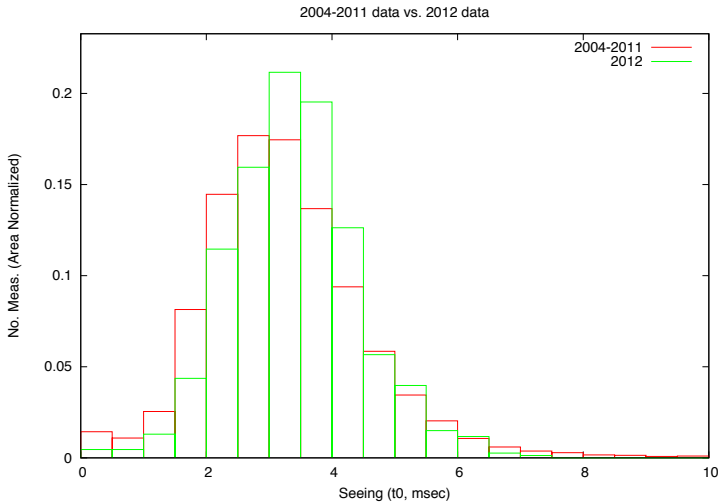
Seeing

t_0 values



Seeing

t_0 values, last year





Earthquake Weather

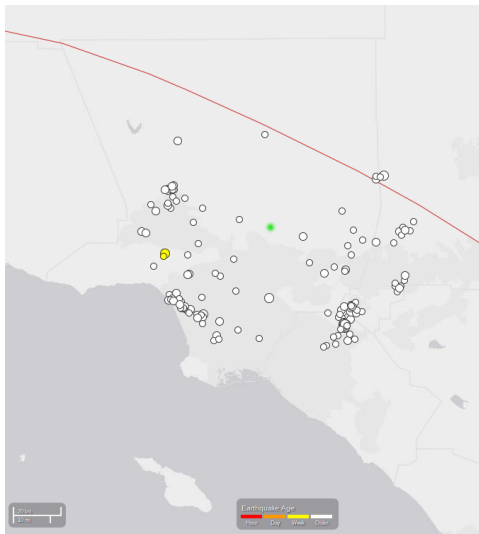


Earthquake Weather

...it's a complete fabrication!

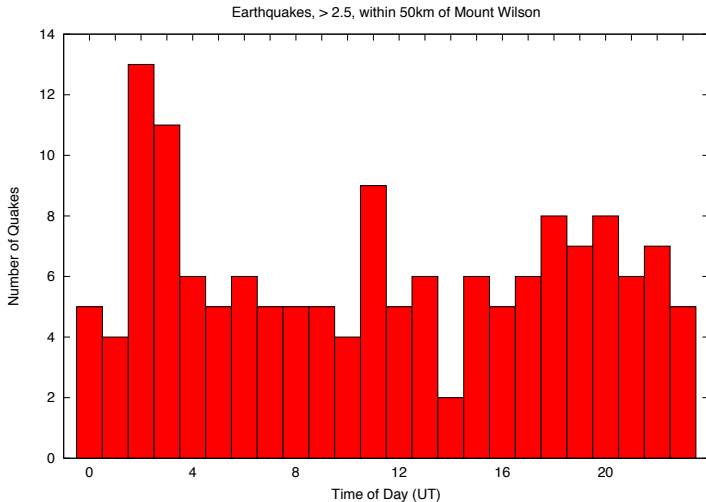
Earthquake Weather

data courtesy of USGS



Tectonic plates can't read clocks!

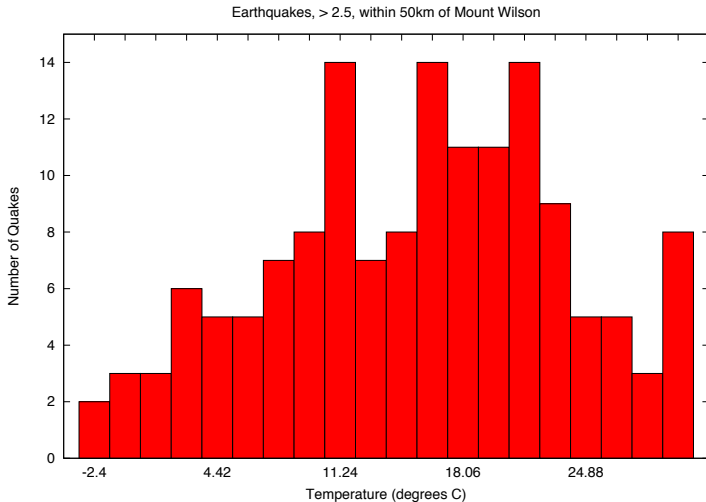
Earthquake Weather



Earthquake Weather

Weather events don't
penetrate the crust!

Earthquake Weather



Earthquake Weather

